

## iPad Version:

The app can be compatible with iOS 3.0 and above. In this version, Cloud (NAT) connection is added as to solve the port forwarding and DDNS problem, saving your time. Also, night mode is added for you to watch in a dark situation.

**If you want to use the Cloud (NAT) method to connect, please visit <http://xmeye.net> first and register.**

Contact:

Email: [appsupport@foxmail.com](mailto:appsupport@foxmail.com)

## User Instruction:

### 1. Connect Methods

### 2. Channel Control

### 3. Remote Play Back

### 4. PTZ Control

### 5. Real-time Alarm

### 6. Audio Function

### 7. Other Functions



## 1. Connect Methods

Please choose the connect method once you launch the app:



“By user” will require you input the account you applied in <http://xmeye.net>, the app will automatically link to the devices you have added in the network

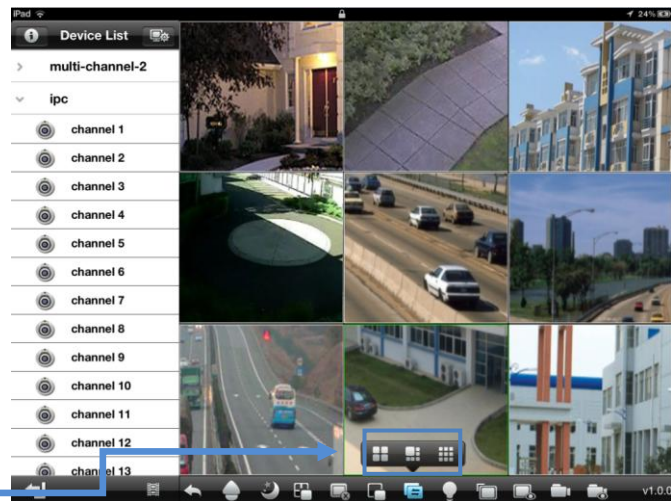
“By device” will use a serial number instead; users will also need to set the serial num on the above website.

\*Please turn on the cloud

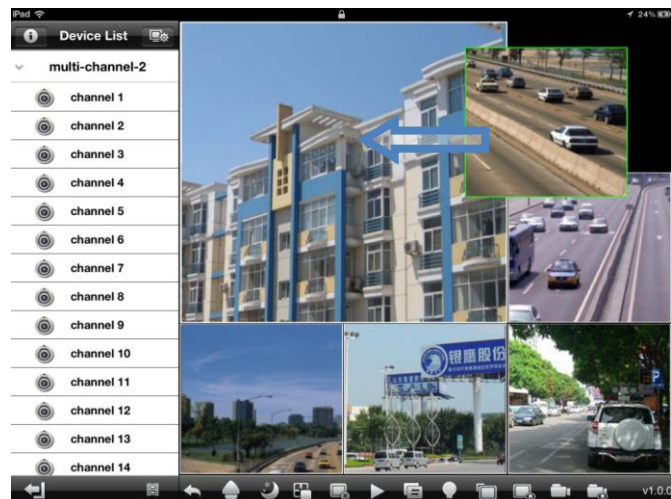


## 2. Channel Control


1. To start playback, touch the square on the play screen to select (note border on selected square); then double tap a channel in the list on the left to start viewing. Double tap a camera to view in full screen.
2. While in full screen mode, swipe left or right to change the live channel to the next/previous cam
3. Double tap again to return to multi view
4. Switch the channel viewing mode from four to six and nine using these buttons on the control bar.



Touch a channel on the screen and drag it to the channel position to rearrange your viewing window.




## 3. Remote Play Back

When click the  in the main Interface, the Play Back will show. Note the list on the left, after click Searching button, then click the clips You want to play.

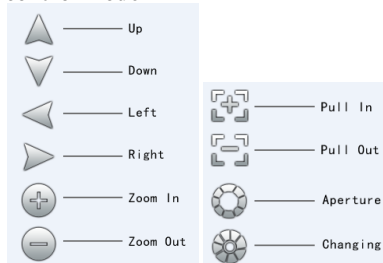
You can also save the screenshot and Remote video to your iPad as well.



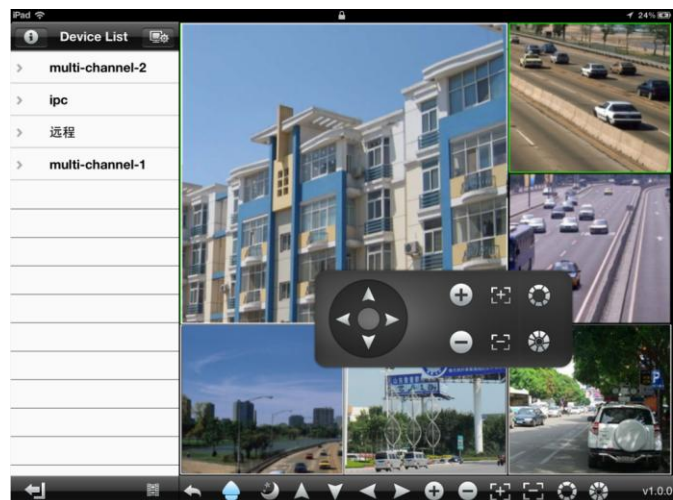
## 4. PTZ Control

Click  to switch to PTZ

control mode



If you choose Float in the Settings, you can place your PTZ panel wherever you like in the app interface



## 5. Real-time Alarm

When something unexpected happens while viewing, the alarm icon will be highlighted and alert will be sounding (can be set)

The alarm types include: I/O Alarm, Motion Detection, Video Blocking and Hardware Error.

You can also set the alarm sounding type in the [setting menu](#)



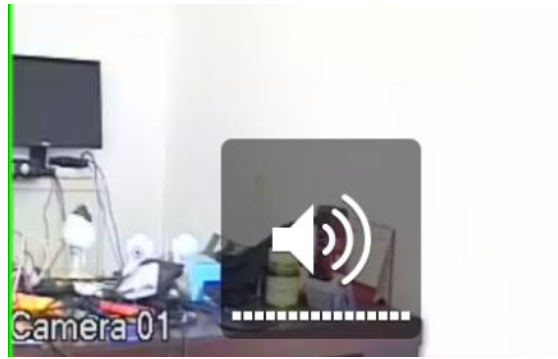
This is an example of Motion detection alarm; you can set the sensitivity in the DVR



## 6. Audio Function

This App supports one way audio from the cameras (need audio supporting cameras). You can also control the volume using the button in your iPad.

\*Audio function can be selected in the local setting menu



Play Audio:

ON

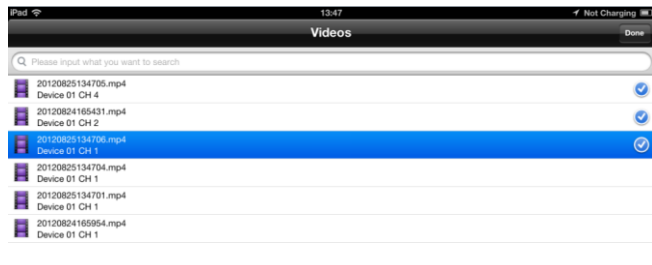
## 7. Other Functions

### Snapshot and Local recording management

1. You can manage snapshot by clicking icon

2. Recording local video by clicking and then click again to end

3. Managing all the videos with button



Note: To delete or save videos, please tap the “edit” on the right top, then choose the videos, tap “delete” or “ Save to photos album” to finish the operation.

### B. Channel Control

While playing, tap the button to clear the play history of selected channel

When you want to stop the connection of all channels, tap this button

By tapping button , you can stop playback on the selected channel

### C. Night Mode

If you need to use the app in very dark situation and the light of iPad is too strong for you, you can click to control the lightness.

